

WHAT TO ADD TO YOUR LANDSCAPE

Trees

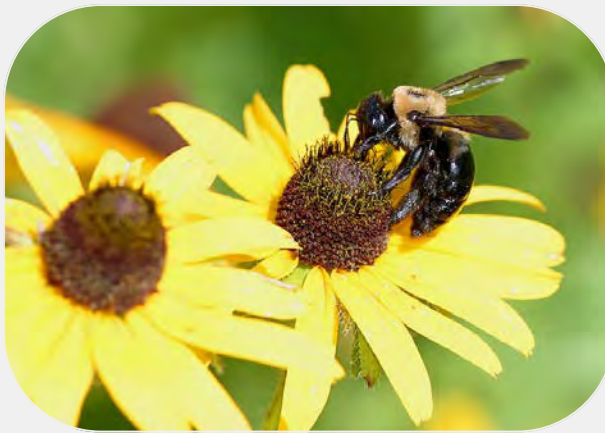
- Swamp White Oak
- Serviceberry
- Flowering Dogwood
- Eastern White Pine
- Common Pawpaw

Shrubs

- Buttonbush
- Northern Spicebush
- Gray Dogwood
- Nannyberry Viburnum

Flowers

- Purple Coneflower
- Cardinal Flower
- Ironweed
- Wild Geranium
- Great Blue Lobelia
- Butterfly Milkweed



CONTACT US

 1180 S. Main St. Ste. 230
Akron, OH 44301

 staff@summitoh.net
summitswcd.com



SUMMIT
SOIL & WATER
CONSERVATION DISTRICT

LANDSCAPING WITH NATIVE PLANTS



Plant ideas and landscape
tips for a beautiful yard
and healthy environment



WHY USE NATIVE PLANTS?

Native Plants are adapted to local environmental conditions and:

- Require less water
- Require less maintenance
- Have lower fertilizer and pesticide needs
- Provide food and shelter for a plethora of wildlife
- Add color and interest to a landscape



WHAT ARE NATIVE PLANTS?

Native plants are trees, grasses, shrubs and flowers that have evolved over thousands of years in a particular region. They are well-adapted to the physical features and climate of the area.



Native plants provide habitat for a variety of native wildlife including songbirds and butterflies.



Because native plants grow in the wild without human intervention, they are sensible choices for lowmaintenance gardens and landscapes.

PROBLEM SOLVING WITH NATIVE PLANTS

Can a native plant take care of that bare spot in your landscaping?

Finding the best native plant for your yard is easy! Just follow these easy steps:

1. Analyze the prospective site for soil drainage, sun, and nutrient levels of the soil.
2. Find a native plant that works with your site's habitat.
3. Locate and obtain your native plant from a reputable source.

