

## Native Landscape Plants

### TREES

Red Maple and Sugar Maple  
Pin Oak, Scarlet Oak, & Black Oak  
Black Walnut  
White Ash  
Ohio Buckeye  
River Birch  
Flowering Dogwood  
Eastern Redbud  
Serviceberry  
Washington Hawthorn  
White Pine  
Canadian Hemlock

### SHRUBS

Arrowwood  
Nannyberry  
Gray, Silky, and Red Osier Dogwood  
Pussy Willow  
Witch Hazel  
Button Bush  
Spice Bush  
Winterberry  
Common Juniper

### FLOWERS

Purple Coneflower  
Butterfly Weed  
Tall Larkspur  
Black Eyed-Susan  
Ox-Eye Daisy  
Cardinal Flower  
Blue Lobelia  
Evening Primrose  
Wild Columbine  
Wild Geranium

## Composting for a Healthy Yard



- Composting turns yard wastes into valuable organic fertilizer.
- You can build your own bin or purchase one.
- Good composting materials include leaves, grass clippings, woody brush, vegetable and fruit scraps, coffee grounds, and paper.
- Avoid using diseased plants, meat scraps, and pet manure.
- Composting can be as simple or involved as you would like and depends on how much yard waste you have, how fast you want results, and how much effort you want to invest.



1180 South Main St.,  
Suite 230 Akron, Ohio, 44301  
Phone: 330-929-2871  
staff@summitoh.net  
summitswcd.com

## Summit Soil & Water Conservation District

### Non-Point Source Pollution And You



### Lawn Care and Landscape Tips for Clean Water

## Non-Point Source Pollution

Non-point source pollution is a fancy term for polluted storm water runoff. Polluted runoff is our nation's greatest threat to clean water!



As rain and snow-melt flows across the land, pollution particles are picked up and carried to our lakes and streams. Excess nutrients, sediment, pesticides, herbicides and other pollutants can lead to problems including:

- ☞ Weed choked lakes
- ☞ Muddy streams and ponds
- ☞ Fish kills
- ☞ Loss of habitat for aquatic life
- ☞ Higher sewer and water bills



## Is My Yard a Source of Pollution?

Healthy lawns add beauty and value to our homes and can reduce erosion, filter runoff, and encourage that runoff to soak into the ground. Keeping lawns healthy may require the use of fertilizers. But applying excess fertilizer to your lawn can be harmful for our lakes and streams and can drain your wallet.

Studies have shown that 70% of all lawns are regularly fertilized, whether they need it or not! Here are some tips for a healthier lawn.

- ☞ Have your soil tested to determine the fertilizer needs of your lawn. (Remember-more is not always better.)
- ☞ Look for organic or no-phosphate fertilizer.
- ☞ Practice good lawn mowing techniques, and mow high and often.



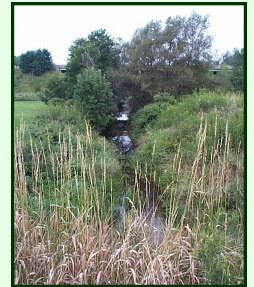
**Don't Guess!  
Soil Test!**

- ☞ Leave clippings on your lawn. They are a natural and free source of nutrients!
- ☞ You can use liquid aeration to promote good root development and water infiltration.
- ☞ Seed bare areas and cover with mulch to keep soil protected and prevent erosion.
- ☞ Sweep all fertilizer and grass clippings from paved areas and onto your lawn area.

## Simple Lawn and Landscape Tips

- ☞ Never apply chemicals next to storm sewers, ponds, lakes or streams.
- ☞ Leave a natural unmown buffer Between water bodies and lawn areas to help filter pollutants before they enter your lake or stream.

- ☞ Plant native grasses that are best suited for our area, such as Kentucky Bluegrass, Rye grass, and the Fescues.



- ☞ Choose landscape Plants that have low fertilizer and water needs, such as Native Plants.
- ☞ Healthy trees and shrubs do not require annual fertilizer applications. Excess fertilizing leads to overgrowth which will require additional pruning and maintenance.
- ☞ Create habitat for beneficial insects and eliminate pesticide and herbicide use.

