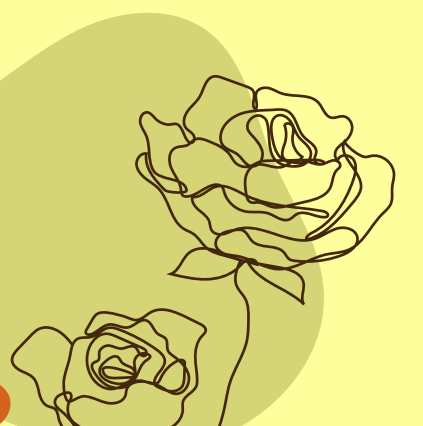


PEAT ALTERNATIVES

For houseplants: Avoid peat and make your own house plant soil by mixing coco coir with perlite, vermiculite, sand or sandy soil, and sterilized compost. Make sure to follow the needs of your specific houseplant when creating potting soil.

For bulking up compost: Create compost from lawn trimmings, veggie scraps, pine needles, woody debris, and much more! Beat the peat!



SUMMIT
SOIL & WATER
CONSERVATION DISTRICT

1180 South Main ST
#230
Akron, OH 44301

CONTACT US



(330) 926-2445



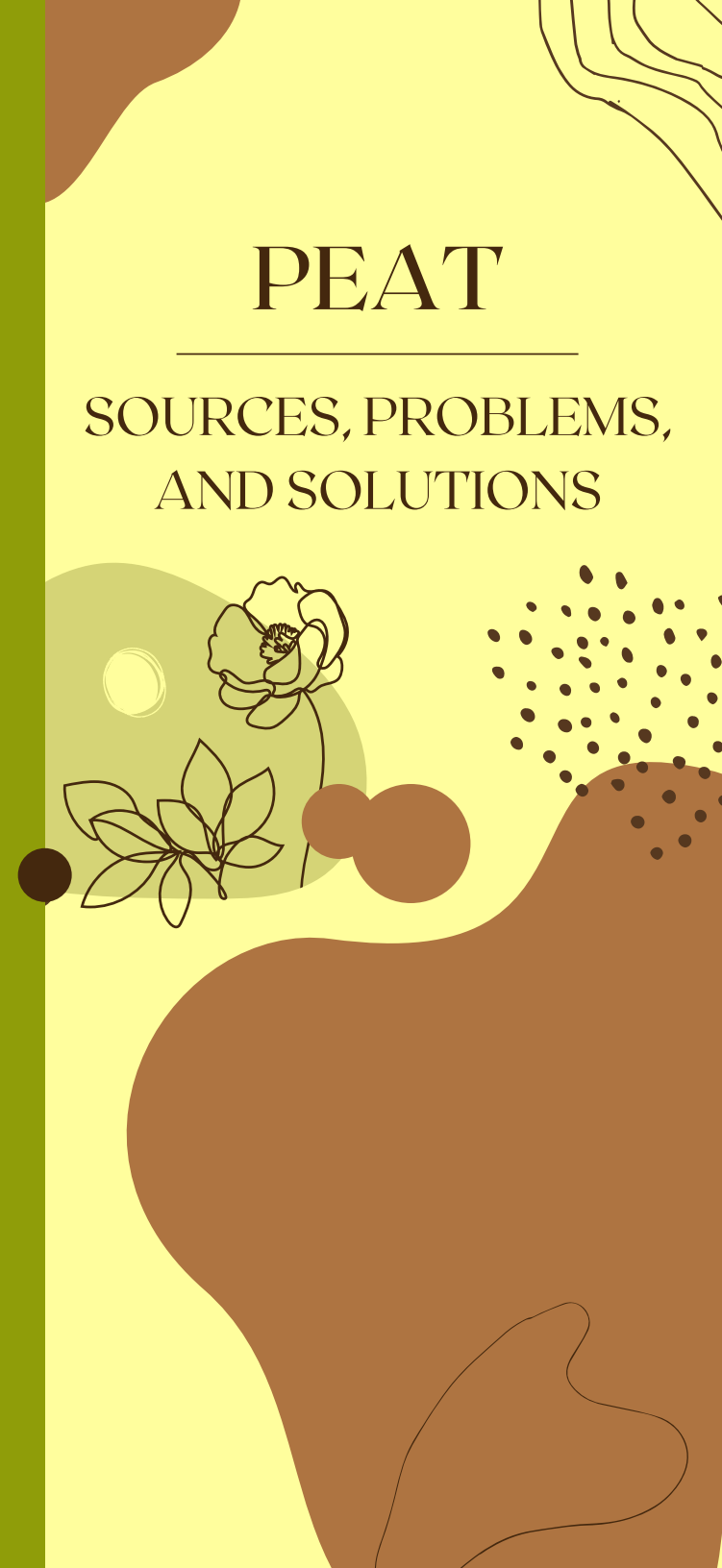
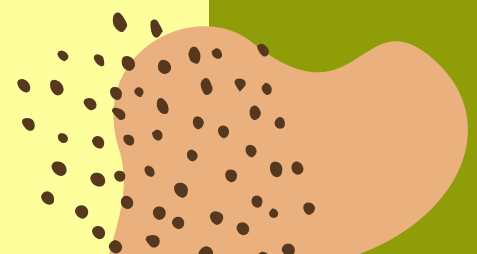
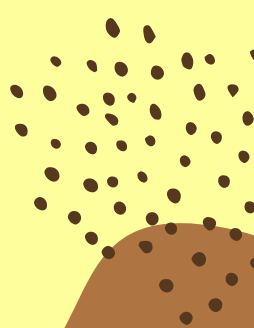
summitswcd.com



staff@summitoh.net

PEAT

SOURCES, PROBLEMS,
AND SOLUTIONS



WHAT IS PEAT?

Good for the garden, but bad for the environment!

"Peat is the surface organic layer of a soil that consists of partially decomposed organic matter, derived mostly from plant material, which has accumulated under conditions of waterlogging, oxygen deficiency, high acidity and nutrient deficiency."

Peat forms when plants die and don't fully decompose. In North America, these conditions are often found in wetlands like bogs and fens when sphagnum moss and other vegetation dies. However, peatlands and wetlands are found all over the world.

PROBLEMATIC PEAT

1. Peat is harvested for human use and takes hundreds or even thousands of years to form. Peat is being harvested at a much higher rate than it is being replaced. It is a non-renewable resource.

Wetlands perform several essential ecosystem services, including: flood control, pollution filtration, sediment trapping, nutrient storage, and habitat for species of unique plants and animals. Wetlands are destroyed when peat is harvested, and these ecosystem services are lost.

2. Peatlands are carbon sinks! This means that as plants grow, they take up carbon. When they die, they don't decompose, so the carbon is stored in the peat instead of being released. This process is known as sequestration. Destroying wetlands releases that carbon back into the atmosphere, which increases the greenhouse gas effect and global climate change.

PEAT ALTERNATIVES

- For seed starting: Coconut Coir. Coco coir is created from the by-products of harvesting and processing coconuts. It is a renewable resource, and has amazing water retention capabilities. It can be mixed with worm castings for a DIY seed starting mix.
- For garden beds: Compost. Aged compost is full of nutrients and has the added benefit of containing beneficial bacteria, fungi, and other microorganisms. In addition, compost reduces the need for chemical fertilizers. It can be made at home or purchased from the store.